

Using GNOME as the enterprise desktop

David Liang <dliang@suse.com>

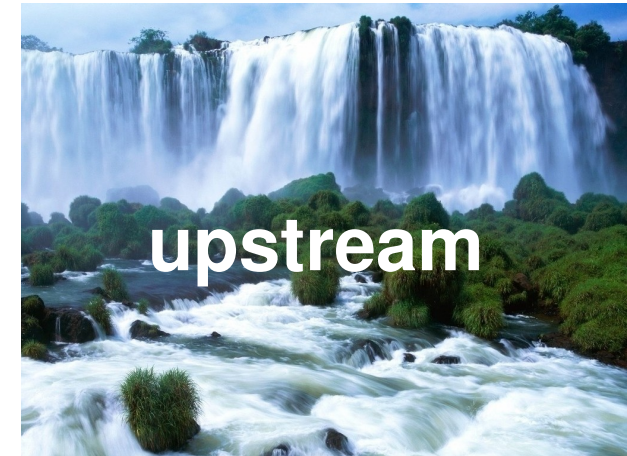
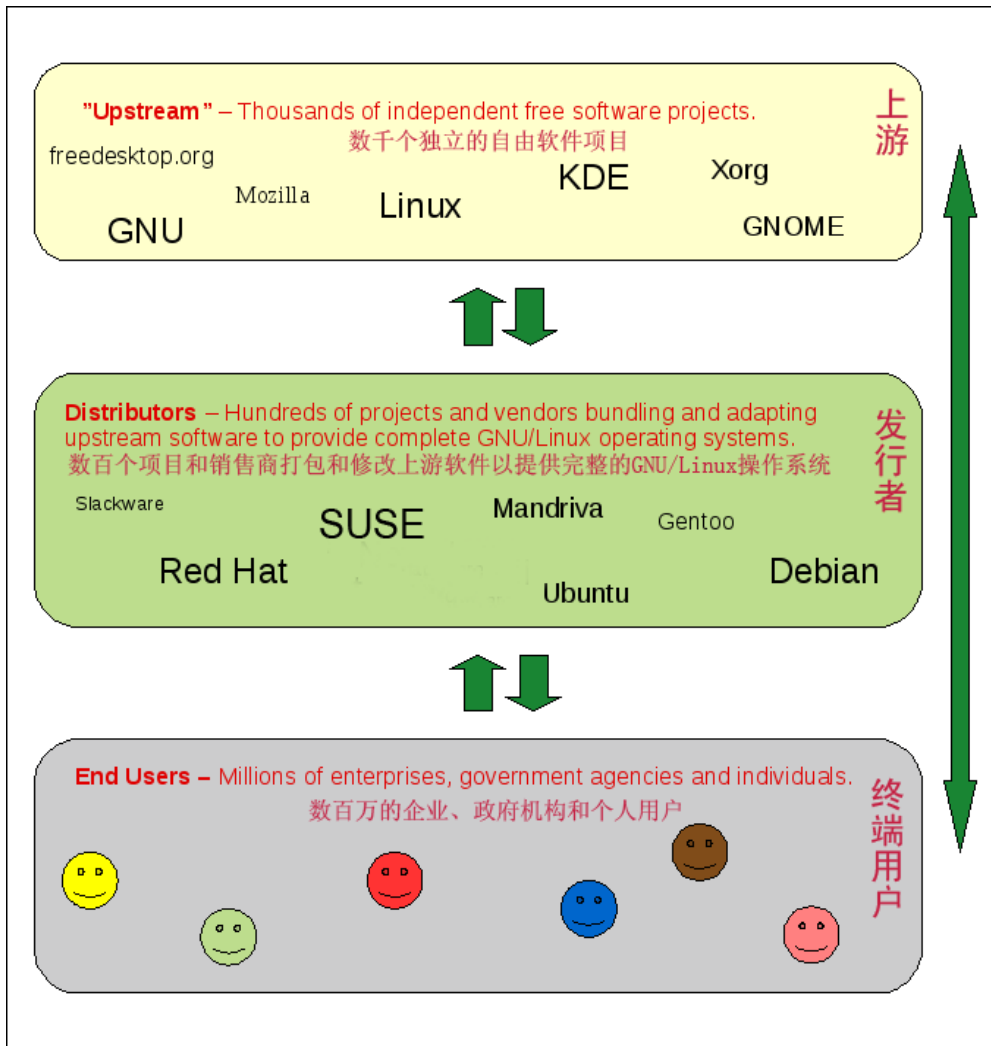


Overview

- The story of SLED
- How do we choose a desktop
- What are we doing
- The strength of Linux desktop

- **The story of SLED**
- How do we choose a desktop
- What are we doing
- The strength of Linux desktop

Linux Distributors



We do not manufacture water, we just water porters.



The story of SUSE & GNOME



- Founded in 1992, Germany
- Gorgeous KDE
- Acquired by Novell on 4 November 2003



- Ximian, founded in 1999, provide international GNOME support
- Acquired by Novell on 4 August 2003

In previous SLED (9, 10, 11), we ship GNOME as the default desktop.

What is the problem in SLED12?

GNOME3 is..... controversial

- **UI**

There was a time, no classic-mode

- **3D**

cool for end user, but is not the most important and urgent requirement

*Time to make decision, for the following, let's say,
7 years*

- The history of SLED
- **How do we choose a desktop**
- What are we doing
- The strength of Linux desktop

Target customer

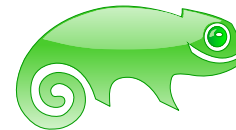
The end user

- Huge market
- Broad reputation
- Consumer goods
- Unpaid users



Enterprise user

- 'Small' market
- Behind the scenes
- Producer goods
- Paid users

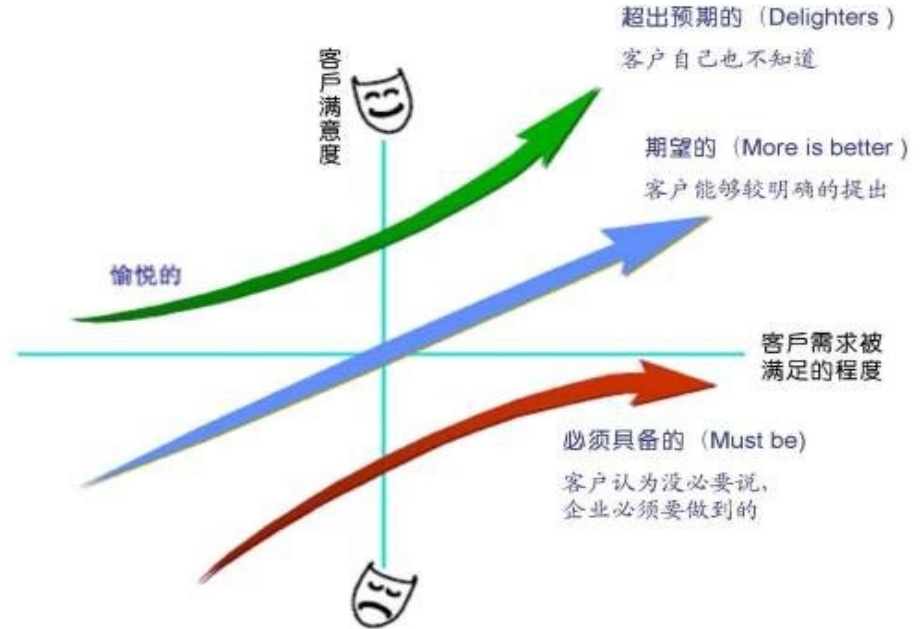


Requirement analysis

The end user

Enterprise user

- Compatible
- Data migrate
- Solid quality



We want something like gnome2

—— voice from customers

- Solution one

Pick other desktop environment

XFCE, MATE...

- Solution two

Make gnome3 looks like gnome2?

I could be customized to any shape.

—— voice from gnome-shell

More than gnome2

- The overall market of desktop is decline. Tablet/mobile
- Gnome3 could be used in touch screen.
- Gtk3

3D

- LLVM-Pipe software acceleration
- But for the server which do not like 3D at all – light desktop, icewm/twm

The old story of 3D

The different attitudes between upstream and some developers:

Pass the ball forward?



Why GNOME3: What is a good open source project

- **Mature**

Live for years, wildly used, good brand.

Fragment desktop is interesting, but not competitive.

- **Active**

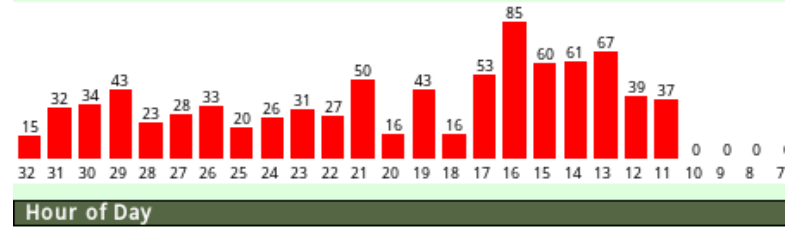
Code commit, bug report

- **Upstream**

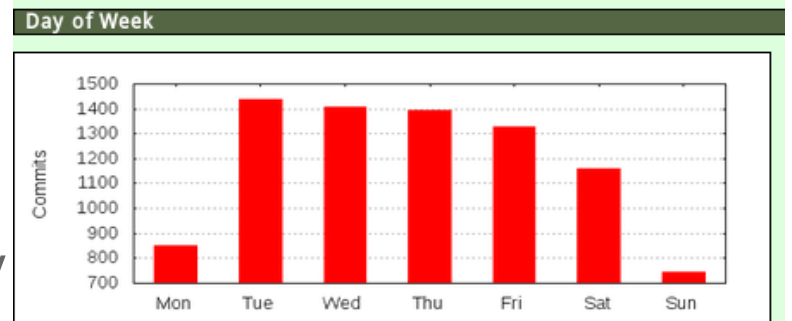
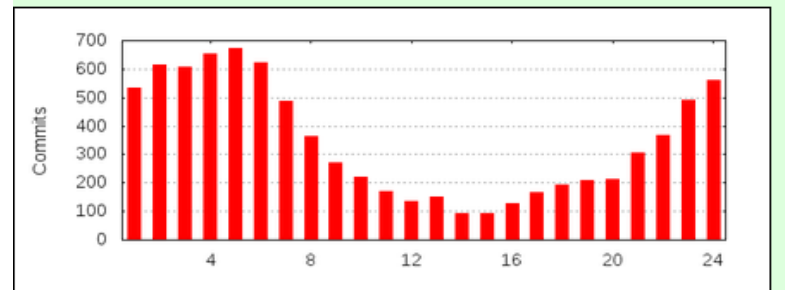
Not only a couple of people

Not drive by a certain company

GitStats: Gnome-shell



Hour	0	1	2	3	4	5	6	7	8	9	10	11	12	13	14	15	16	17
Commits	535	614	607	655	671	622	487	362	272	219	172	137	152	93	93	129	165	193
%	6.43	7.38	7.29	7.87	8.06	7.47	5.85	4.35	3.27	2.63	2.07	1.65	1.83	1.12	1.12	1.55	1.98	2.32



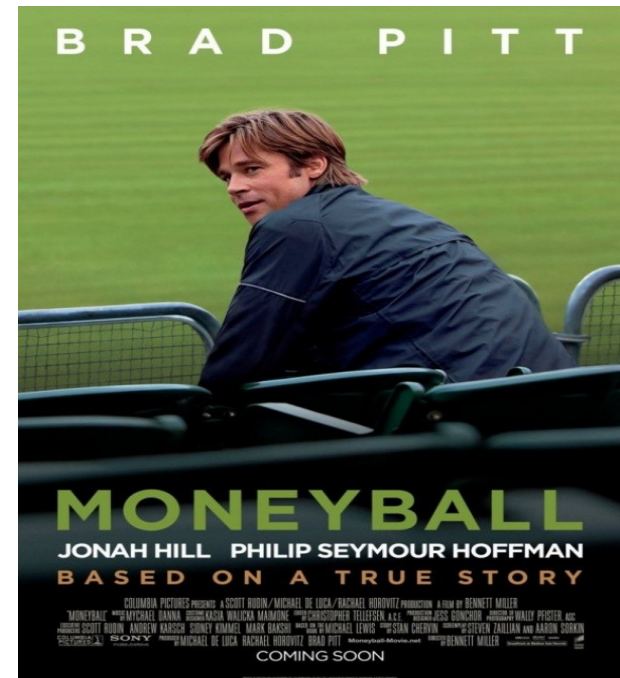
Do we make a right decision?

We always hear
complains.

The era of big data

An open source
project maturity
analyzing framework?

Once we made a
decision, that is the
best decision!



Maturity analyzing framework

- **For developer**
Recognition of their work
- **For upstream**
Care about their weakness
- **For distributor**
Find the best project

- **Papers**
- **Current framework**



- The history of SLED
- How do we choose a desktop
- **What are we doing**
- The strength of Linux desktop

Different attitude with community

What should we do

- Focus on core libs
 - authentication, network protocols,
 - X

What should we not do

- Do not provide tools like 'app store' – different approach with Canonical
 - we can, but not really necessary

Daily works

- Hardware enablement
- Solution with complicate environment
- Features from customers
- Bugs from anywhere

Submit our fix to the upstream

Contribute to upstream.

Upstream is the only standard to confirm we did the right work.

Be patience

- Patience is more important than passion
- Work is done by patch, not by speech.

SLED team's objectives

- Improve our desktop
- Integrate applications to our desktop
- Evaluate different desktops
- Evaluate different applications

What is more

Help local community – welcome to join our training or hackweek project!

- The history of SLED
- How do we choose a desktop
- What are we doing
- **The strength of Linux desktop**

How to promote Linux Desktop

Begin with end user

Begin with enterprise user?

LinkedIn

or



Strength

Community



Weakness

Applications
SDK/document

commercial support

Opportunity

Linux server became popular.
GNOME is ready!

XP is out of service?

It is not the opportunity, never!
Don't relay on that.

Threat

Misleading.

Windows? Andriod?

Yes. But no if we have the
right positioning.

Strength

No community
No future



Weakness

Make better
SDK/document

Using in commercial
environment

Opportunity

Trust and use our
desktop, use GNOME!

Threat

The sprite of freedom, the
sprite of open source.

--- most important

OpenSUSE.ASIA is coming.

(October 18-19, 2014)

Thank you.





Corporate Headquarters
Maxfeldstrasse 5
90409 Nuremberg
Germany

+49 911 740 53 0 (Worldwide)
www.suse.com

Join us on:
www.opensuse.org

Unpublished Work of SUSE. All Rights Reserved.

This work is an unpublished work and contains confidential, proprietary, and trade secret information of SUSE. Access to this work is restricted to SUSE employees who have a need to know to perform tasks within the scope of their assignments. No part of this work may be practiced, performed, copied, distributed, revised, modified, translated, abridged, condensed, expanded, collected, or adapted without the prior written consent of SUSE. Any use or exploitation of this work without authorization could subject the perpetrator to criminal and civil liability.

General Disclaimer

This document is not to be construed as a promise by any participating company to develop, deliver, or market a product. It is not a commitment to deliver any material, code, or functionality, and should not be relied upon in making purchasing decisions. SUSE makes no representations or warranties with respect to the contents of this document, and specifically disclaims any express or implied warranties of merchantability or fitness for any particular purpose. The development, release, and timing of features or functionality described for SUSE products remains at the sole discretion of SUSE. Further, SUSE reserves the right to revise this document and to make changes to its content, at any time, without obligation to notify any person or entity of such revisions or changes. All SUSE marks referenced in this presentation are trademarks or registered trademarks of Novell, Inc. in the United States and other countries. All third-party trademarks are the property of their respective owners.

