

World of GNOME

Emily Chen
Board Director
GNOME Foundation

2011-03-31

2011-04-01



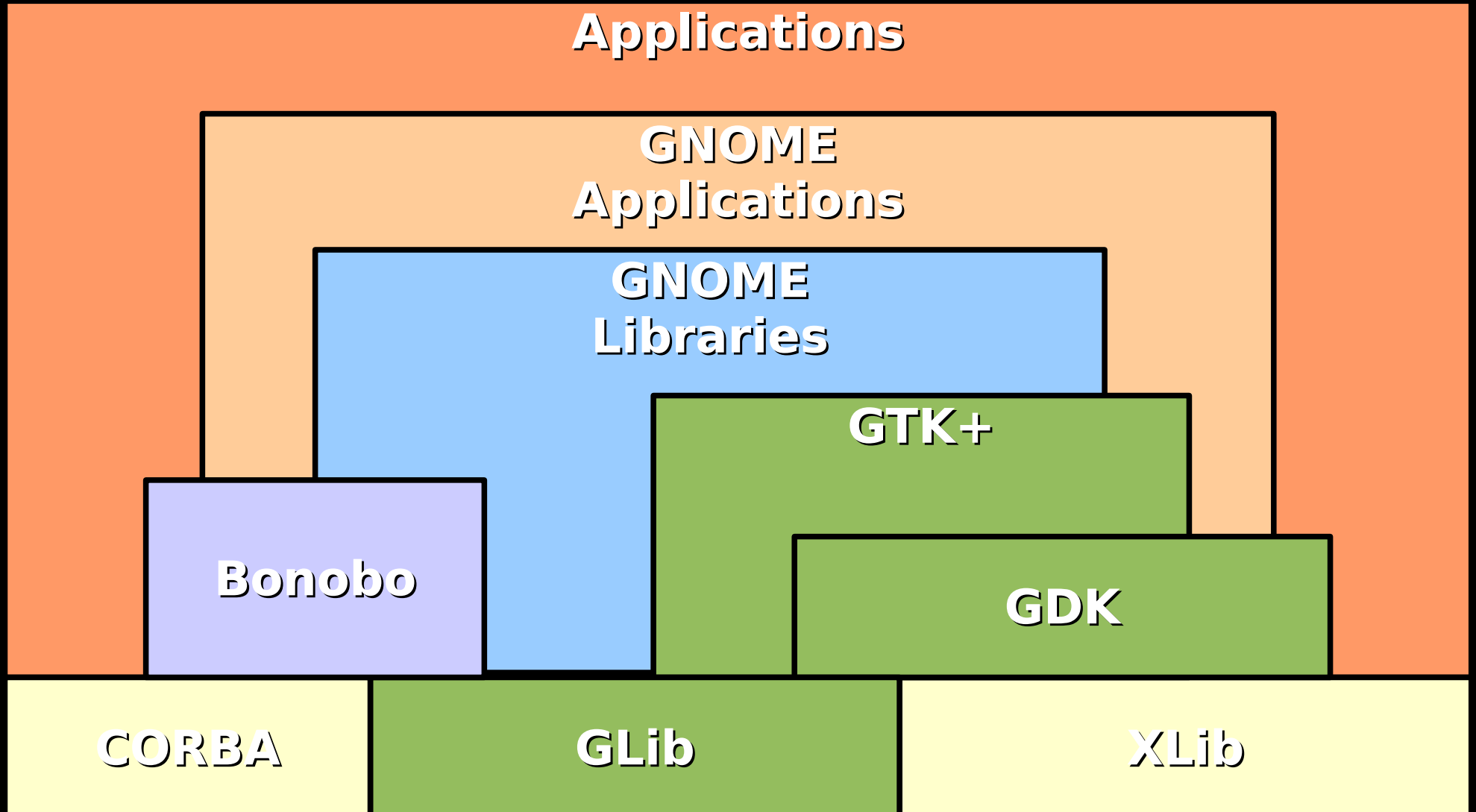
GNOME

- GNU Network Object Model Environments
- GNOME (pronounced /g'noum/)

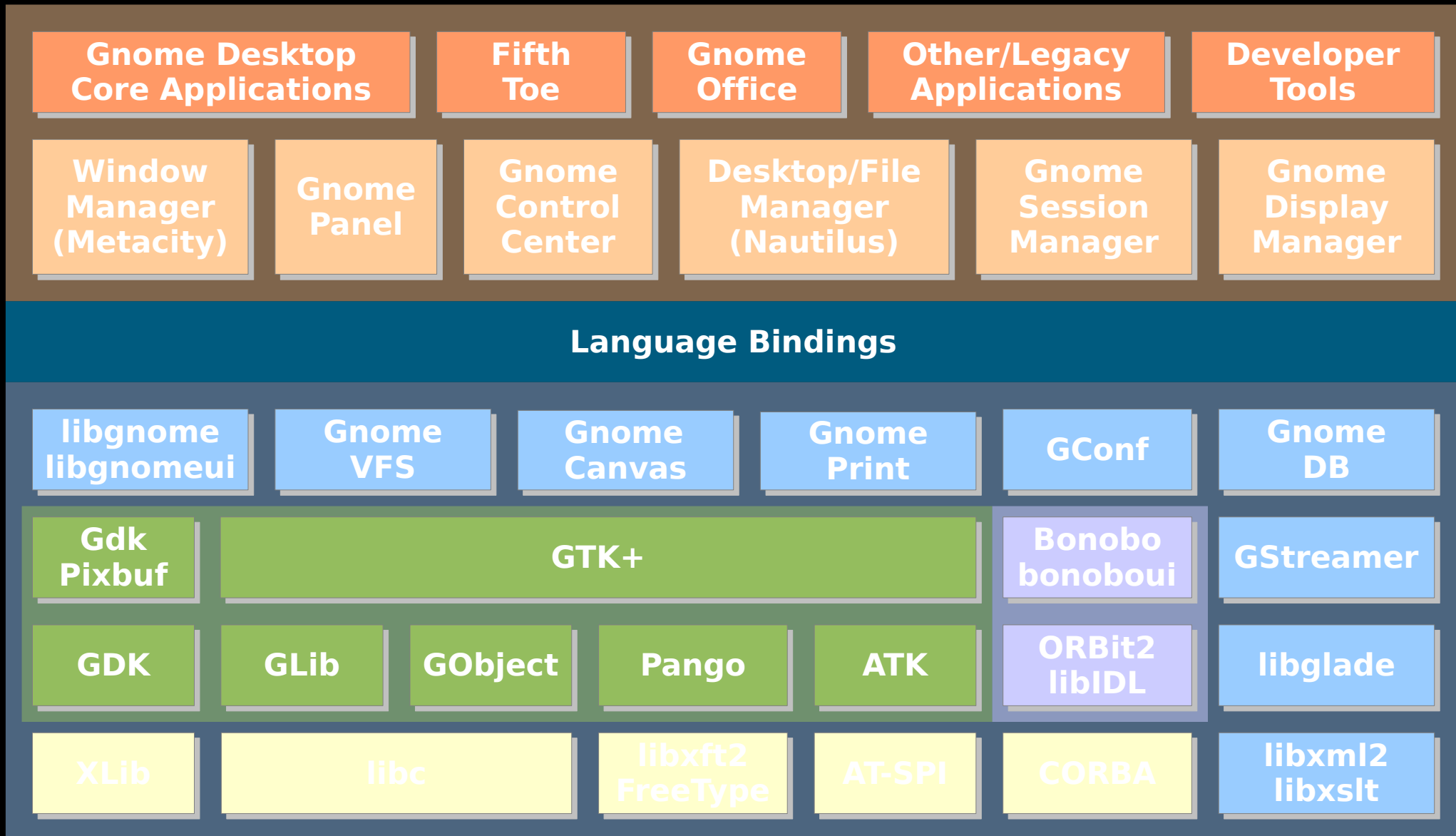
GNOME Provides...

- For Users
 - a complete, free and easy-to-use "Desktop Environment"
- For Developers
 - a powerful application "Development Framework"

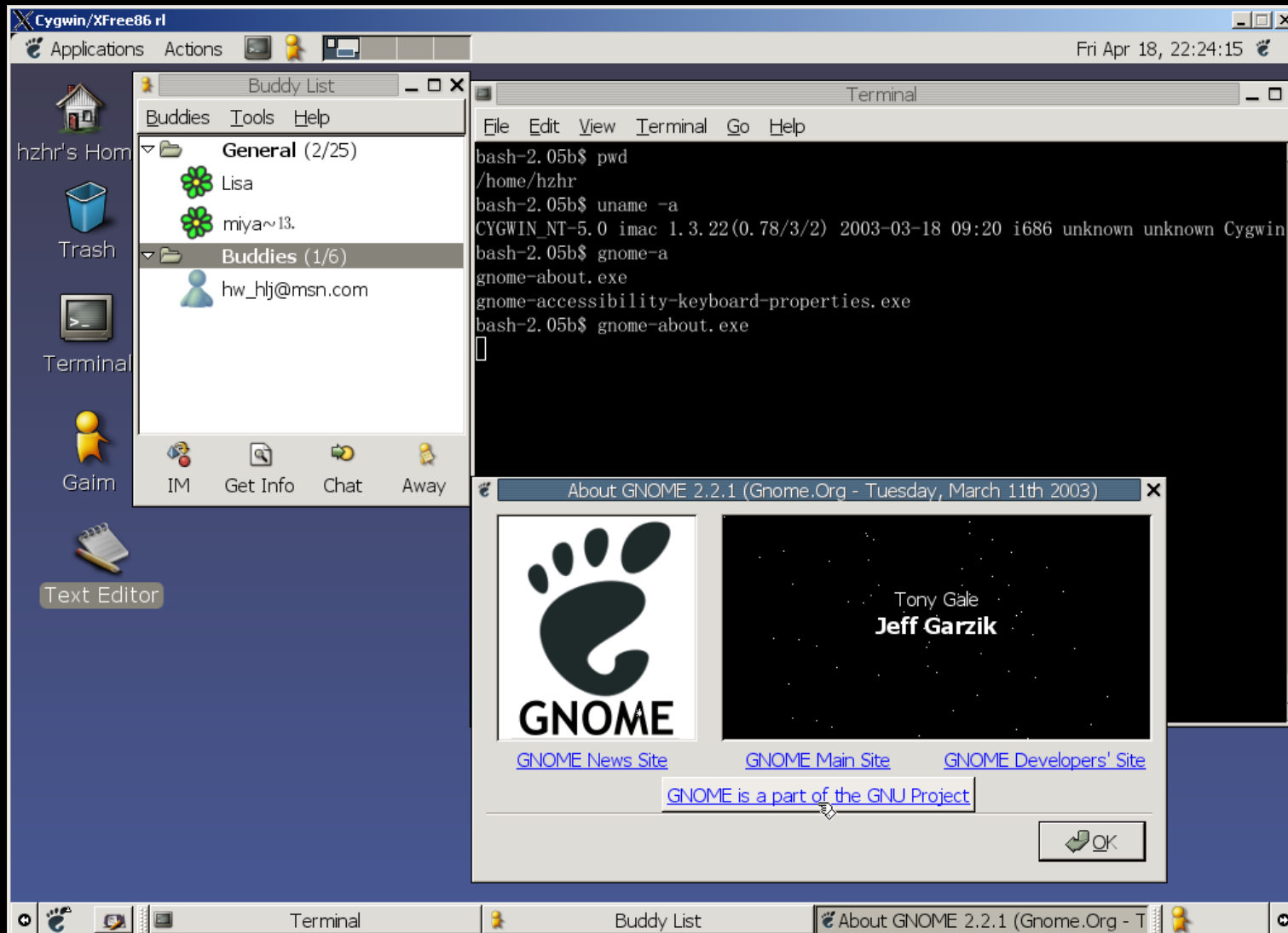
GNOME at a glance...



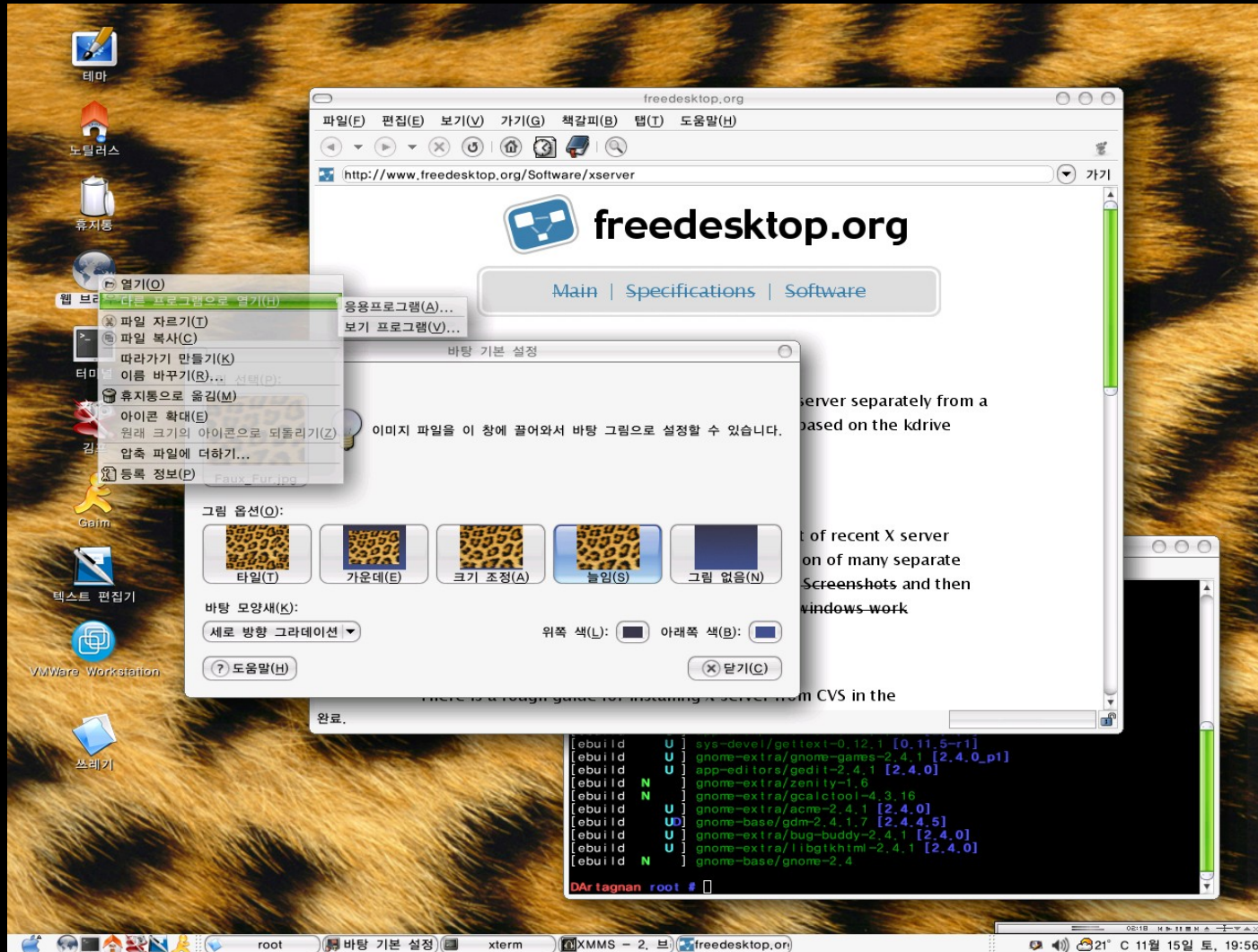
Overall Architecture



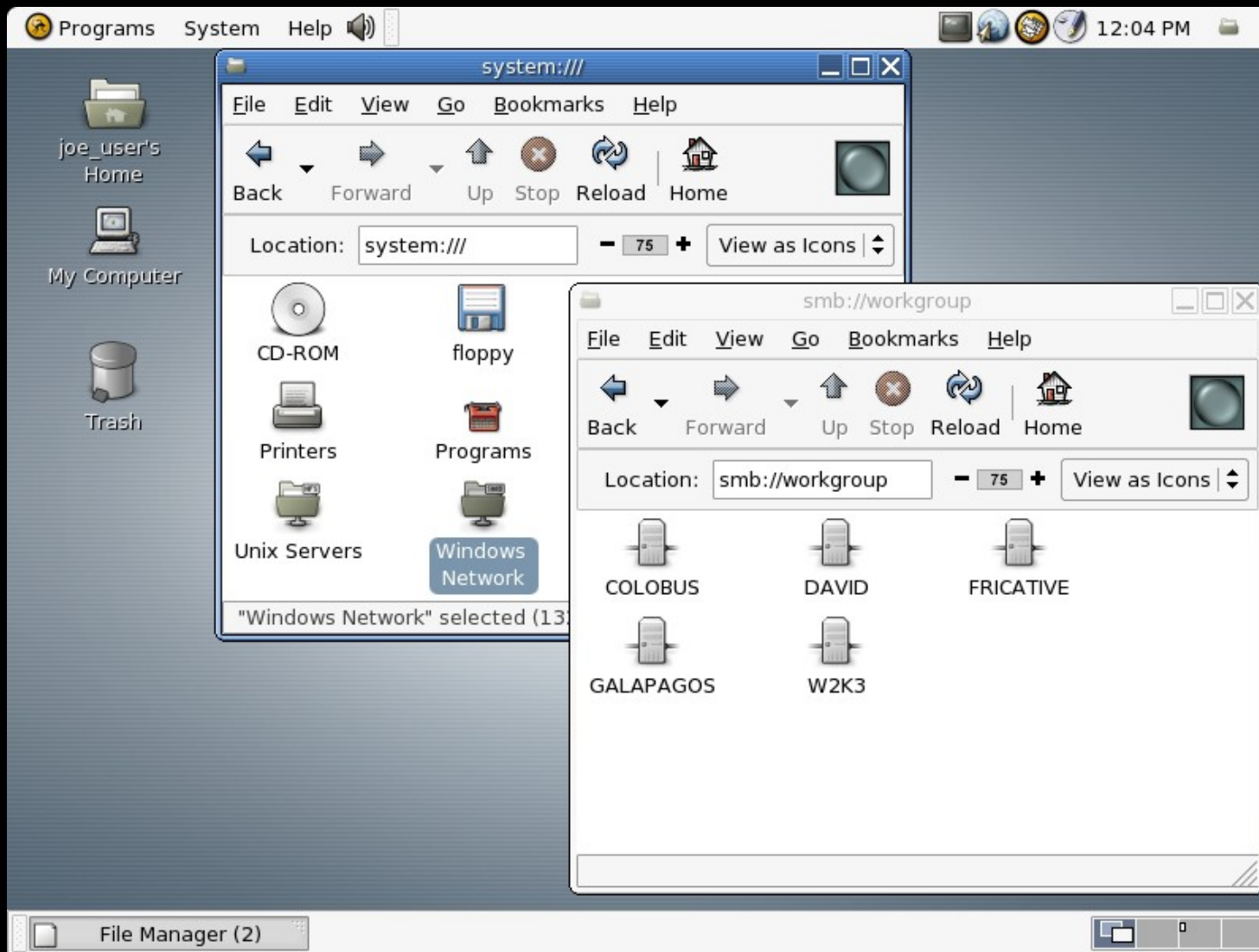
CyGnome 2.2.1



freedesktop.org

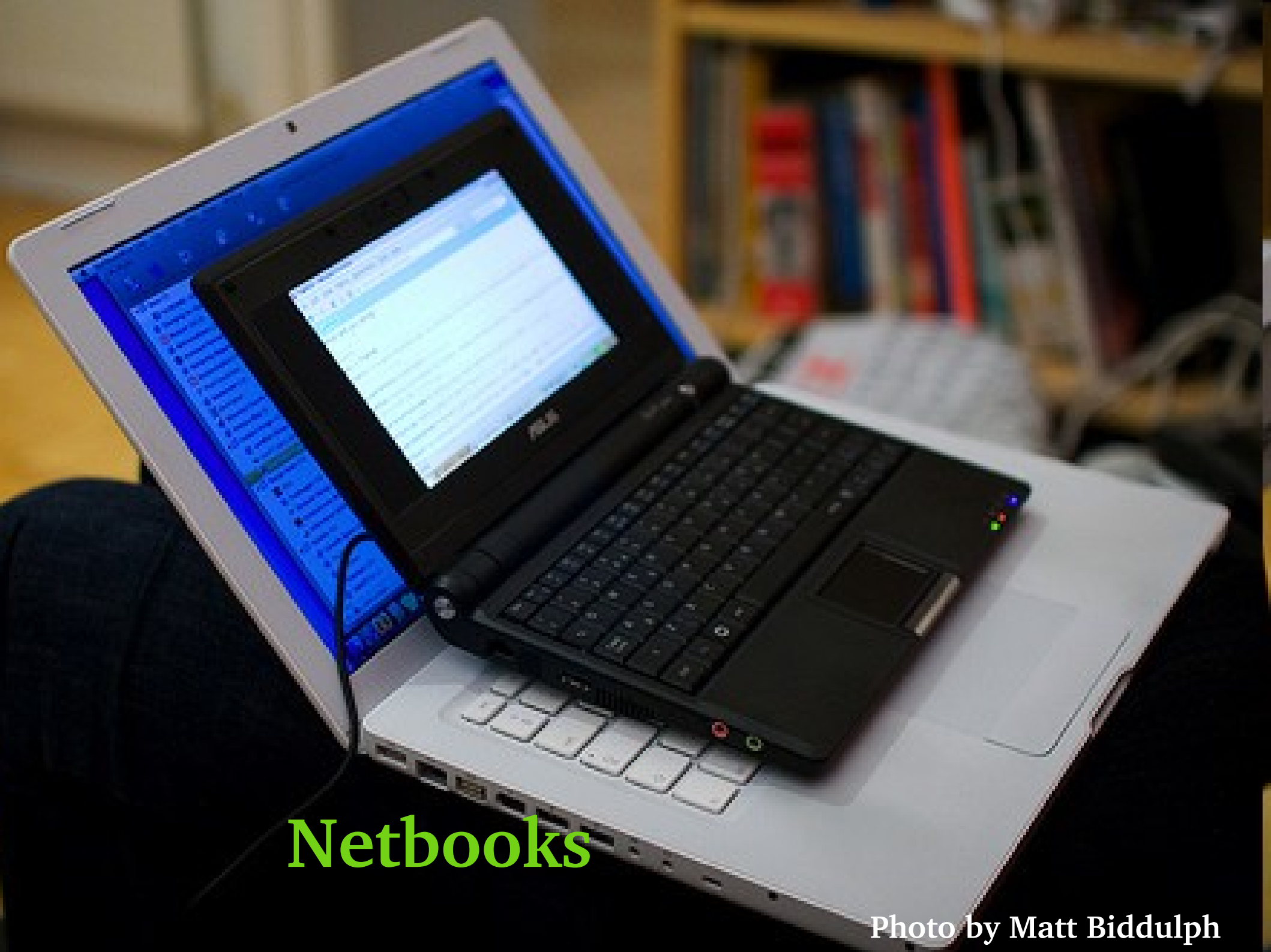


Ximian's Ximian Desktop 2



Sun's Java Desktop System





Netbooks

Photo by Matt Biddulph









...a mobile platform



GNOME 3.0

Activities dt 6:10 Bluetooth Network Signal Strength Siegfried Gevatter

Search bar

Applications

Missatgeri... Terminator

More...

Recent Documents

- Captura.png 1 minute ago
- dbusutils.py 22 minutes ago
- engine.py 29 minutes ago
- testDBus.js 32 minutes ago
- appDisplay.js 44 minutes ago
- docDisplay.js 1 hour ago
- docInfo.js 1 hour ago
- remote.py 1 hour ago
- zeitgeist.js 1 hour ago
- itemTag.js 1 hour ago

More...

Captura.png 1 minute ago

savage2 screenshot test



File used 22 times (22 within the last 30 days).

Web browser window showing the GNOME website (http://www.gnome.org) and a chat window titled 'Converses (3)' with tabs for 'Dani R.' and 'jpds'.



GNOME:

a free desktop

accessible to everyone

**... more than just a
desktop.**

**What are the GNOME
values?**



Accessible



Internationalization

Localization



Free



Usability

Photo by ntr23



Easy
to use



Beautiful

Photo by Michelle Brea

Work well with companies



The image features three glass spheres of varying sizes arranged in a diagonal line from the bottom-left towards the top-right. Each sphere is highly reflective, showing a rainbow-like spectrum of colors. The background is a vibrant, multi-colored gradient that transitions from red and orange on the left to green and blue on the right. The spheres cast soft shadows on the surface below them.

Creative

Photo by mdezemery

**Who
GNOME
work with**



Individuals

CANONICAL Collabora  @debian

 FREE SOFTWARE FOUNDATION Google™ IBM

 igalia  intel  MOTOROLA  mozilla FOUNDATION

NOKIA Connecting People Novell. olpc  redhat.

 Software Freedom Law Center  sugarlabs  Sun microsystems

Universities



El río Ebro divide la Basílica Nuestra Señora del Pilar, Saragosa

Governments

How we work

Mailing lists

IRC

Wiki: live.gnome.org

Planet GNOME

Conferences & Hackfests

Core committers

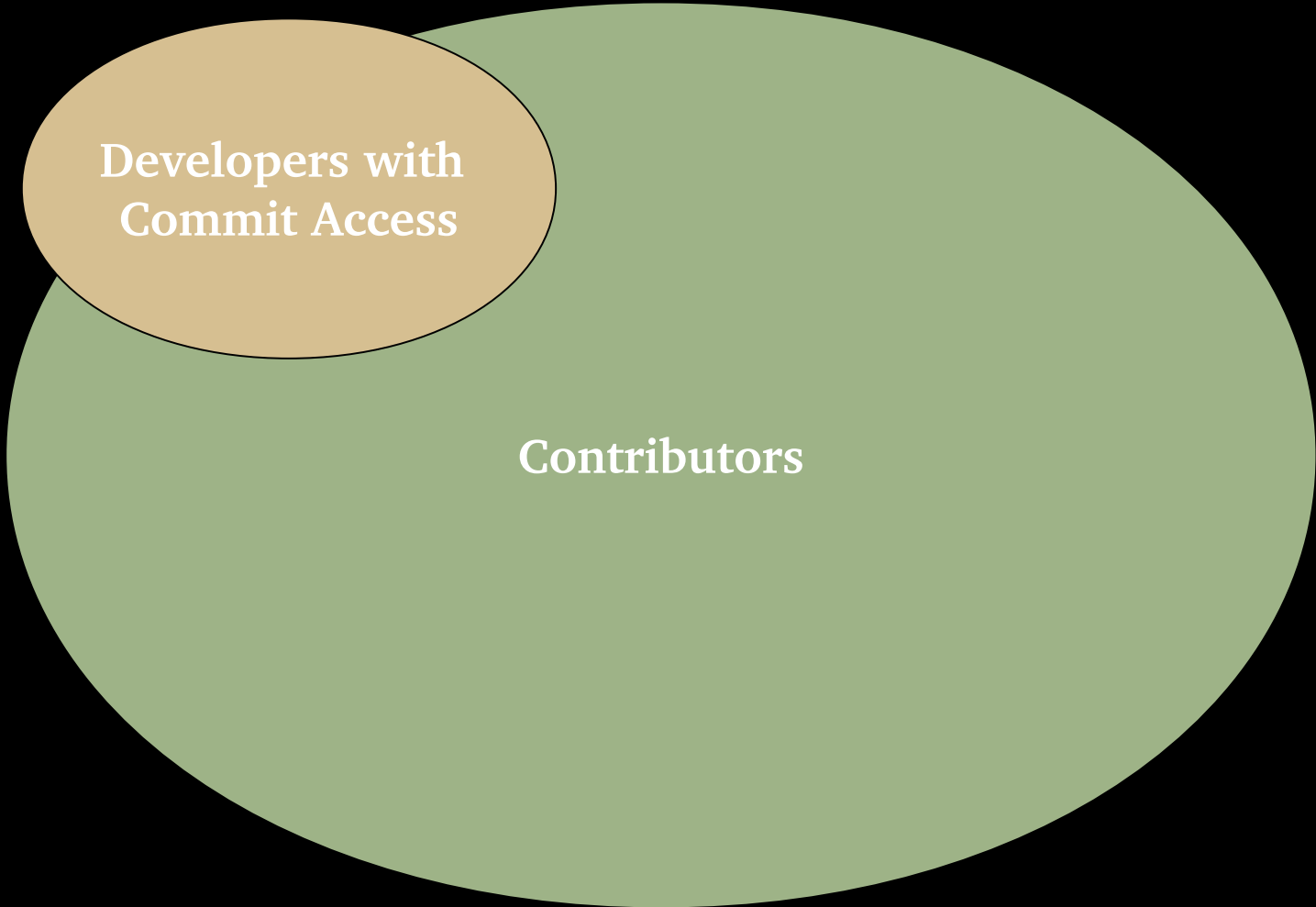


Developers with
Commit Access



Contributors





Developers with
Commit Access

Contributors

Users

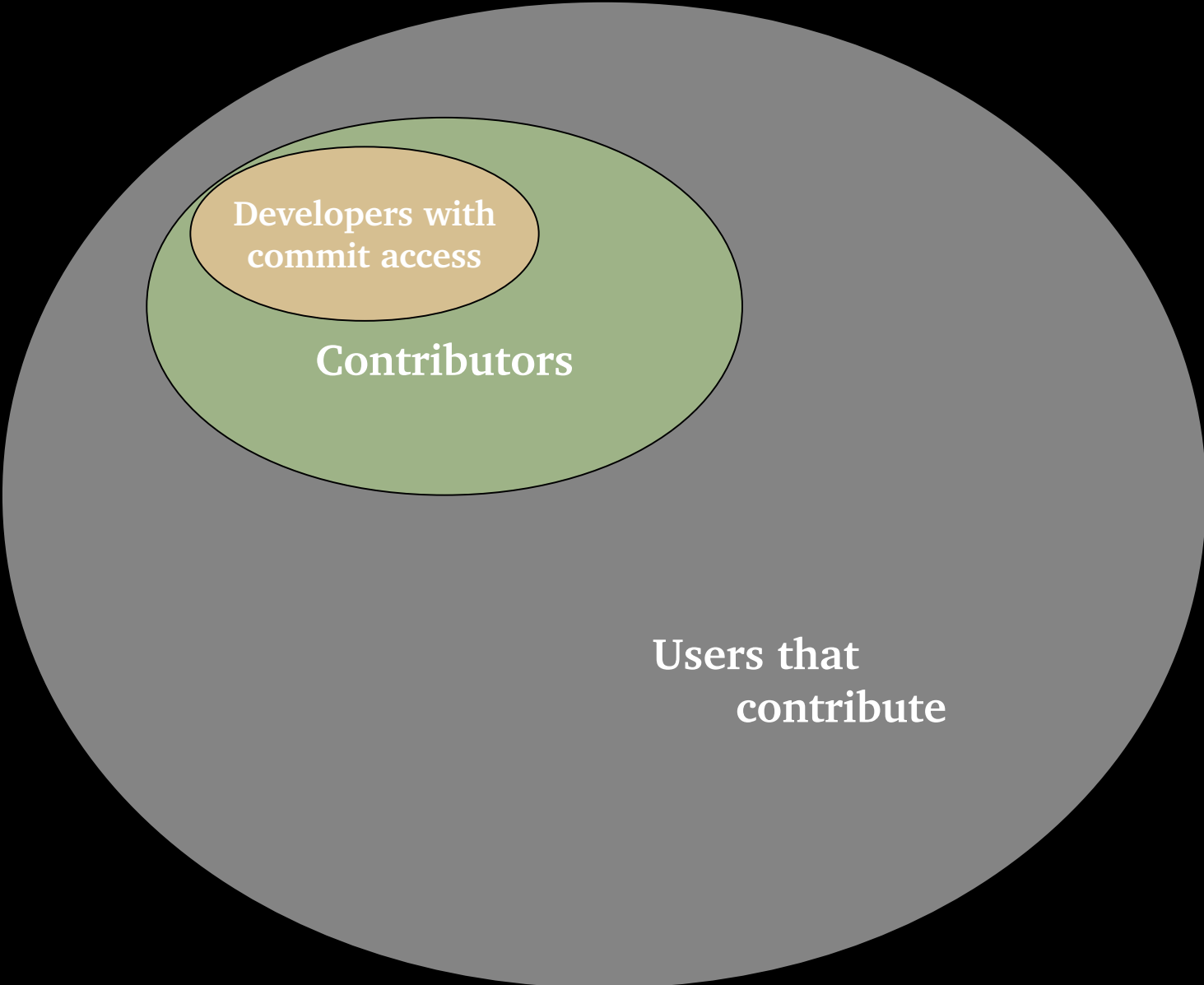


40%

40% are paid contributors

Who pays people?

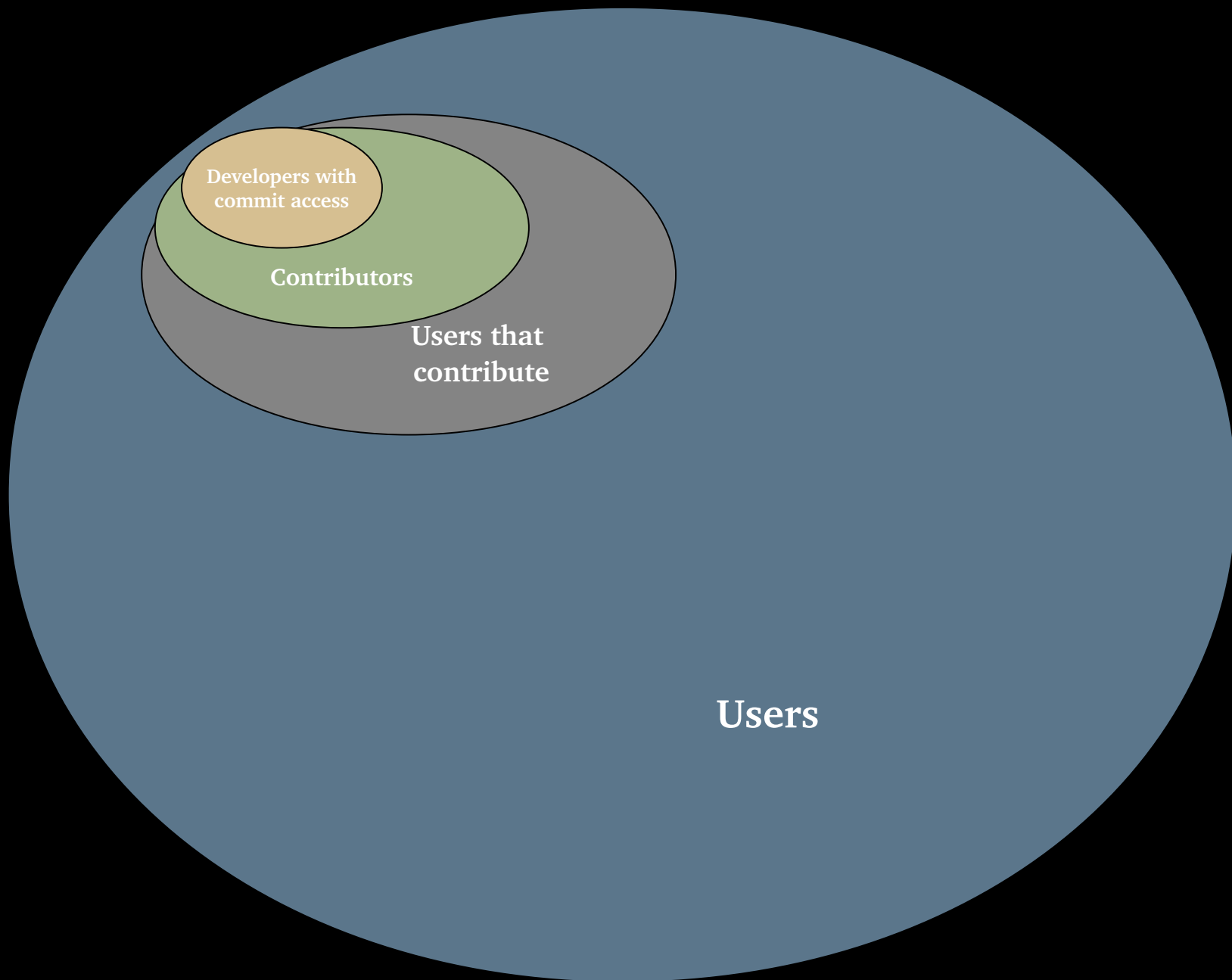




Developers with
commit access

Contributors

Users that
contribute



Developers with
commit access

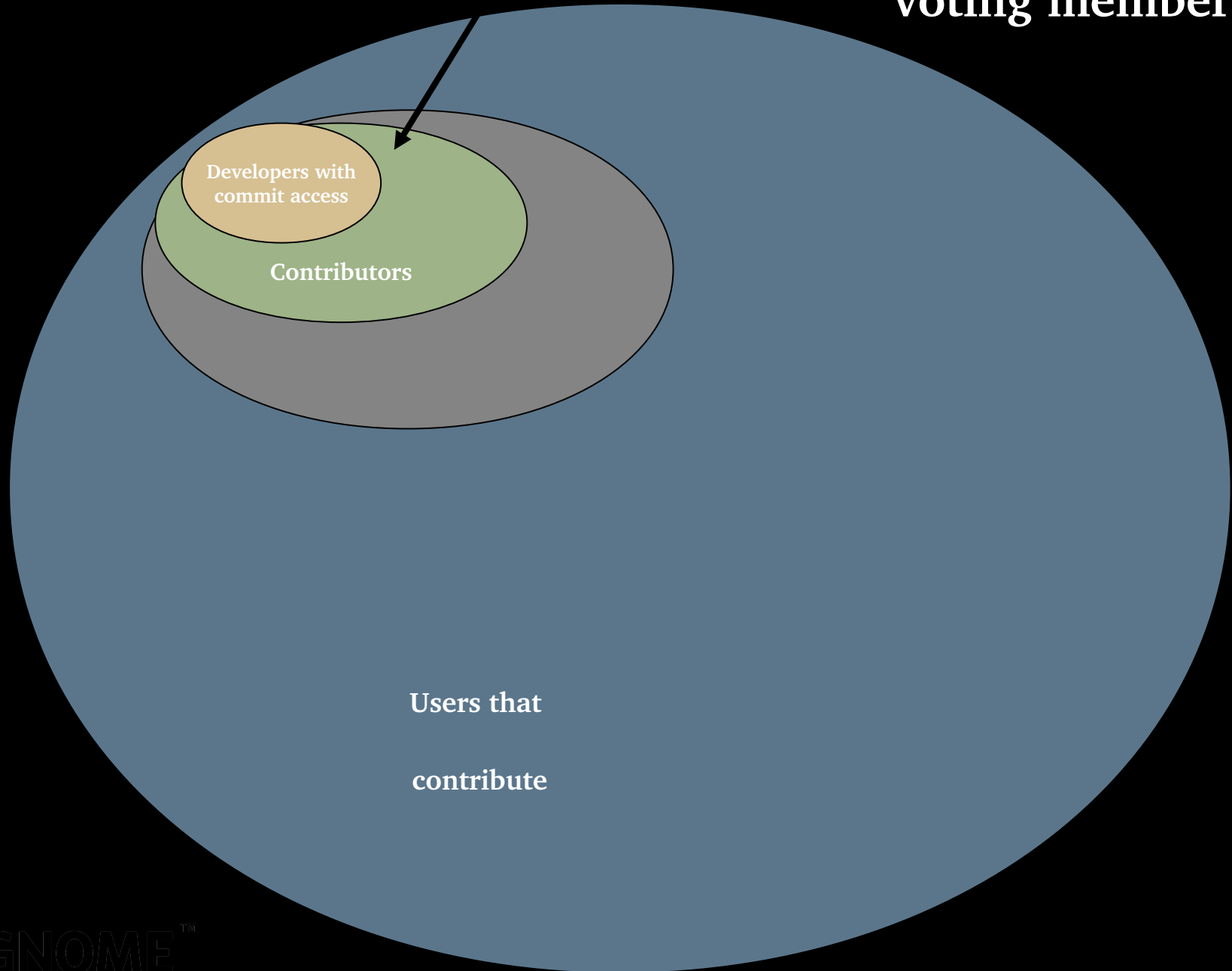
Contributors

Users that
contribute

Users

**14 million
users!**

GNOME Foundation ~400 voting members



Developers with
commit access

Contributors

Users that
contribute

Vote

- 7 directors
- 12 months



**What do the GNOME
Foundation Directors
Do ?**

6 month releases



Photo by slack12



PINK LADY
APPLES

QUALITY
\$4.50
KG

NEW SEASON
WILLIAM PEARS
\$3.50
KG

Marketing

CASH

Dollars

7 99

Cents

99

1516144
452

Budget

**How Does GNOME
Foundation
Get Money ?**

Friends of GNOME

www.gnome.org/friends/





Companies



Tie to users

Photo by ntr23

How Does GNOME Foundation Use Money

To make successful developers





Hackfests

Picture by selva

Building on foundations for the future

- Events
- Travel
- Marketing
- Women's outreach program
- Hire employees
- More



GNOME 3.0 Launch Party



Where do we go from here?



Please join us!

Photo by carf

Talk to GNOME people!











Thank you!

Emily Chen

emilychen522@gmail.com

Become a Friend of GNOME!

www.gnome.org